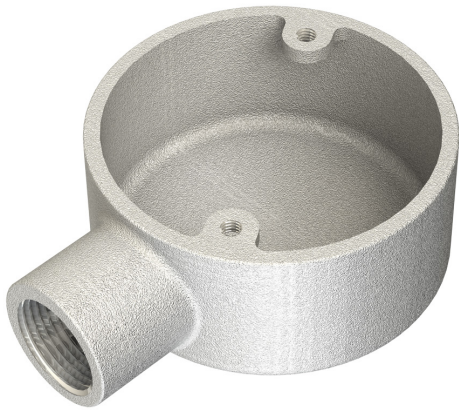


**PRODUCT CODE: MB21G**  
MALLEABLE CONDUIT BOX



**DESCRIPTION**

32mm Malleable Terminal Conduit Box

**FINISH**

Hot Dipped Galvanised

**MATERIAL**

Malleable Iron

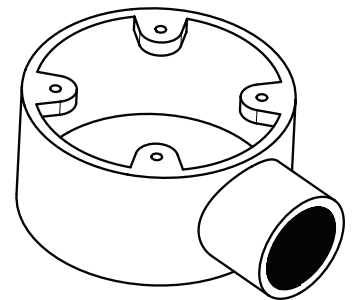
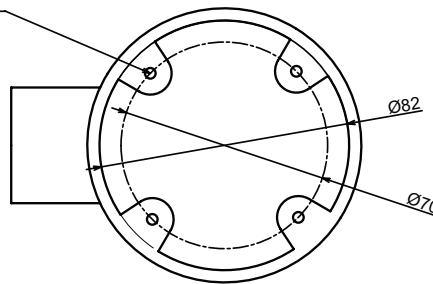
**PACKAGING**

Packed in qty 1

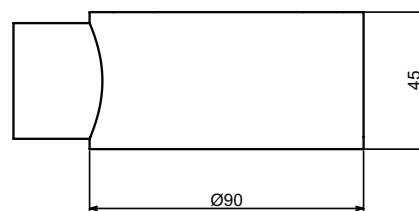
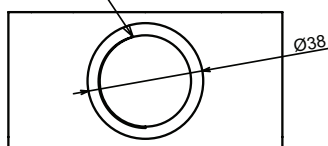
**ADDITIONAL NOTES**

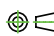
Conforms to BS EN61386-1:2008  
Compliant to LU Standard 1-085 (for use on surface & sub-surface locations)

M4 TAPPED 4 PLACES



M32 CONDUIT THREAD



 Values are nominal and with a general tolerance  $\pm 5\%$  unless otherwise specified